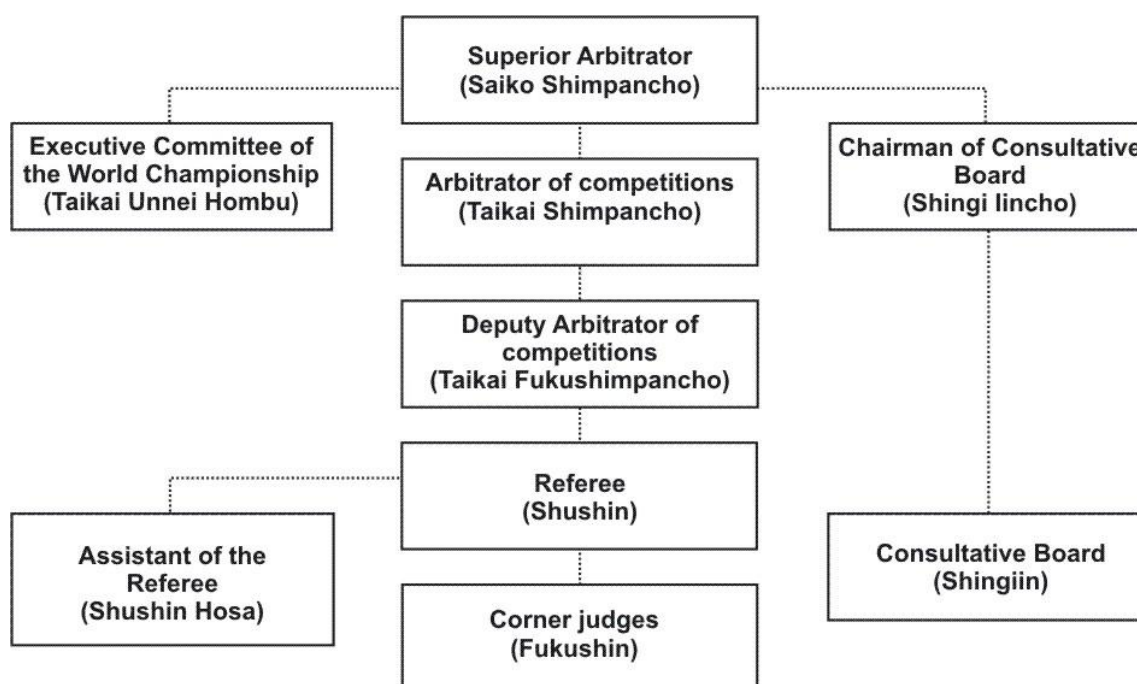


INTERNATIONAL KYOKUSHINKAN KARATE-DO ORGANIZATION
KUMITE COMPETITIONS RULES
JUNIOR TOURNAMENT

GENERAL PROVISIONS (SHINPAN KIJUN)

1. When determining winner the referee and corner judges shall have equal rights, and referee during bout shall be obliged to react upon corner judges' signals.
2. Each fight will be judged by 1 referee, 4 corner judges and 2 assistant referees. However, the competition organizer may decide not to include the assistant judges in the tournament.
3. Should two corner judges show clear victory (Ippon Gachi), Waza-Ari point, violation (Hansoku), referee may add his third vote and reckon the decision by the majority of votes.
4. Should more than three of corner judges show a violation (Hansoku), and depending on whether, upon the rules violation, the situation in the bout evolves in favour of offender or not, referee shall have right either to stop the bout or not to stop it and give command "Mitomezu!" ("No count!"). At the same time, should referee not stop the bout he has to show this to corner judges by gesture and to competitors by the command "Zokko!" ("Continue!").
5. Should three or four judges, including referee himself, determine a violation of rules (Hansoku), and should referee stop the bout, he, depending on seriousness of violation, may give an oral warning (Keikoku), rebuke (Chui) or penalty point (Genten).
6. Should referee determine a violation of rules (Hansoku) and stop the bout but should he not receive support from corner judges and be not able to reckon the violation, he may give offender an oral warning (Keikoku).
7. Should three or four corner judges show clear victory (Ippon Gachi) or Waza-Ari but if referee has a doubt in the propriety of their score, he may stop the bout, gather corner judges for debate, then consult with Superior Arbitrator (Saiko Shnpancho), Arbitrator of competitions (Taikai Shnpancho) or Deputy Arbitrator of competitions (Taikai FukuShnpancho) upon which either declare clear victory (Ippon Gachi), or give Waza-Ari, or give command "Mitomezu!" ("No count!"), or give rebuke (Chui). Referee has to precisely indicate to competitor the reason why he announced "Mitomezu!" ("No count!") or gave him warning (Chui).
8. Any corner judge in response to signals of other corner judges and referee has to clearly express his opinion and to show whether he supports their decision or not, by showing the same signal if he supports the decision, or "Mitomezu!" ("No count!") if he disagrees with the decision, or "Miezu!" ("Has not seen!").
9. When any of the corner judges suspect that the referee has made a clear misjudgment. The corner judge must not over look this matter, and discuss his decision with the referee.
10. A decision (Hantei) shall be made in case of its support by not less than three judges.
11. The Consultative Board (Shingiin) shall make decisions on presentation of special prizes ("For the best technique", "For the will to win", etc.) as well as to discuss any objections made toward referee's judgment, and should any situations the settlement of which is not expressly stipulated in competition rules occur in the course of competitions; final decision shall be made by the Head of Consultative Board (Shingi Incho) and Superior Arbitrator (Saiko Shnpancho).

12. Competitors shall not be dressed in other than the required equipments such as karategis, a groin guard and a mouth piece.
13. If a competitor got injured and need bandaging, bandaging shall be made under a supervision of the competition's physician and it must be signed or stamped by the physician. Bandaging with view to enhance efficiency of attack and defense techniques shall not be allowed.
14. Assistant of referee shall verify observance of requirements specified in clauses 12 and 13 by competitors before their entry to the ring, also the assistant referee must substitutes a corner judge when a competitor belonging to the same team to which the judge belongs enters the ring (substitutions shall be made for the given fight only). However, organizers of competitions, taking into account their rules and conditions of their holding, shall have the right to refuse to appoint an assistant of referee. In this case referee himself shall check outfit of competitors directly on the ring before the bout starts. If in case, a competitor belonging to the same to which the referee belongs to. The referee himself must provide the substitute for that bout only, before the bout starts.
15. Competitions shall be governed according to the scheme provided below.



16. Superior Arbitrator(Saiko Shinpancho) will have the authority to make the final judgment on decisions made during the competition. In the absence of the superior Arbitrator, in the order of Competition Arbitrator(Taikai Shinpancho) and Deputy Arbitrator, may assume the authority as the substitute to make the final judgment.
17. The standard size of a ring shall be 7m x 7m square. However, depending on the size of the location. The ring size may be changed.
18. Ring side area (Jogai) shall be 1.8m as the standard length. When the ring is set up higher than 5 cm from the floor, the length of the ring side area must be more than 1m for the safety of the competitors.
19. The start lines shall be 1m in length, positioned at the center of the ring 2m apart. The right side is white and the left side is red from the Committee's desk.

DURATION OF BOUTS (SHIAI JIKAN)

1. The fight duration is as shown below;

	Honsen	Extension	Weigh In	2 nd Extension
Prep, 1 st & 2 nd Grade	1 min 30 sec	1 min	3 kg	1 min
3 rd & 4 th Grade	1 min 30 sec	1 min 30 sec	3 kg	1 min 30 sec
5 th , 6 th Grade & Junior High school	1 min 30 sec	1 min 30 sec	3 kg	1 min 30 sec
High school	2 mins	2 mins	5 kg	2 mins

2. If no winner was determined after the set duration. The one who weighed less, even by little, is declared the winner.
3. Timing of fight shall begin from the moment of referee's command "Hajime!" ("Begin!"), and the time-keeper who is a member of the Executive Committee of the tournament shall measure the time. Even if any of competitors loses his consciousness, or the fight stops for any other reason, the time-keeper must not stop the time by his own decisions without a relevant signal of the referee.
4. In addition to the referee, the bout may be stopped for reasons listed below by the representative of the Executive Committee of the Tournament who is responsible for holding fights:
 - a) if the representative of the Executive Committee of the Tournament responsible for holding bouts decides that referee forgot to give a signal to stop the time in a situation when the bout is discontinued due to an injury of a competitor, for putting karategi in order, or for any other reason. In this case the responsible person shall announce "Stop the time!" in order to inform all who are present on this decision;
 - b) if the representative of the Executive Committee of the Tournament responsible for holding bouts is asked to do this by a senior judge – Deputy Arbitrator of competitions and more senior judges. In this case the responsible person shall announce "Stop the time!"
5. All Waza-Ari points, penalty points (Genten), recorded violation of rules (Hansoku) shall be cancelled upon expiration of time of the bout and upon decision of judges (Hantei), and during the next time of the bout (in extra time, etc.) they shall not be valid, except for the Oral Warning(Keikoku).

KAIKYU(WEIGHT DEVISIONS)

1. At the Junior High School's division, will be separated by the school grade and weight class.
 - a. Junior high 1st grade : 45kg under, and over.
 - b. Junior high 2nd grade: 50kg under, and over.
 - c. Junior high 3rd grade: 55kg under, and over.
2. All female competitors will be separated by the grades only.
3. High School Male's divisions will be separated by the weight class only.
 - a. under 60kg
 - b. under 70kg.
 - c. over 70kg.

4. High School Female's divisions:
 - a. under 50kg.
 - b. over 50kg.
5. However, depending on the situation, the Kaikyu may be changed by the competition organizer.

KUMITE WINNER DETERMINATION CRITERIA (KUMITE AND SHOBAI)

1. Competitive fights (Kumite) shall be in conformity with the Budo spirit. Competitor must keep distance that allows him to protect himself, including, from attacks forbidden by the rules and aimed to any vulnerable body parts.
2. Great attention shall be paid to the observance of etiquette in Karate competitions. Therefore behaviour of disrespect to opponent shall not be allowed in the competition area. It shall be forbidden to express exultation because of the victory, or clamour because of decision of judges in any manner. Also, it is highly recommended to Kiai(War Shout) during the fight, however, it is not acceptable to Kiai after the fight is over to appeal to the judges before the Hantei. This is regarded as disrespectful act toward the opponent and will be penalised.
3. Winner shall be determined by awarding clear victory (Ippon Gachi); victory in case of getting two points (Waza-Ari) which in total give clear victory (Awasete Ippon Gachi); by decision of judges (Hantei Gachi); due to competitor disqualification (Shikkaku); or due to competitor's refusal from the bout (Kiken).
4. Should the judges judging the fight were not able to determine the winner by sufficient number of votes at the main round(Honsen), the tie(Hikiwake) shall be announced and the extension round shall be assigned.
5. when the winner is not determined within the set duration, the winner is determined by the following order:
 - i. The participants will go for the weigh in.
 - a. for High School's divisions, the one who weighed 5 kg or less is declared the winner.
 - b. For all divisions under high school, the one who weighed less than 3 kg is declared the winner.
 - ii. If there was no significant difference in the weight, the participant will go for another extension, which is has same duration as the 1st extension for its division..
 - iii. If there was no winner after the weigh in and the 2nd extension. The one who is lighter even by a little is declared the winner.
6. If the the competitor(s) were not able to fight that extension round due to injuries. The Superior Arbitrator and the Competition Arbitrator shall make the decision, based on the competitors techniques, fighting spirit and penalty points.
7. Any competitor can have up to 10 seconds. However, the number of seconds may be reduced for security reasons, but in this case organizers must obtain consent of the Superior Arbitrator in advance. The seconds and supporters of a competitor have to observe etiquette and behave themselves with respect to the others.

AWARDING CLEAR VICTORY (IPPON GACHI)

1. Clear victory (Ippon Gachi) shall be declared for the effective strikes or kicks delivered to any body zone allowed by the rules, which brought the opponent to the floor, or which became the reason why the opponent lost his desire to continue fighting.

AWARDING WAZA-ARI (“TECHNIQUE RECKONED”)

Waza-Ari shall be awarded:

1. for the fist strike or kick delivered to any body zone allowed by the rules, which became the reason for the opponent to temporarily lose his desire to fight;
2. Because of head gears, all kicks delivered to the head is given Waza-Ari. However, whether that technique was effective enough or not will be judged by the referee.
3. for the timely clear and technically correct marking (without actual contact) of the final strike (Gedan Zuki) to the opponent knocked-down to the floor by a leg sweep without any grabbing or hooking on.
4. for the timely clear and technically correct marking (without actual contact) of the final strike (Gedan Zuki) to the opponent who tried to deliver a kick while falling deliberately(Do-Mawashi). The one who attempt to use that technique, must get him/herself up quickly before the final strike is delivered.
5. If low or middle couter attack was delivered clearly, and fell onto the ground without a struggle. Even if the participant did not receive any damage, this will be considered as Waza-ari.
6. If a participant lost balance in an attempt to deliver a high kick, and was forced to fall onto the ground without a struggle. Even if he had his hands up for a guard. Waza-ari will be awarded.
7. for 5 and 6. If the participant does not fall easily, it will not be Waza-ari.
8. Two Waza-Ari points in total give clear victory (Awasete Ippon Gachi).

AWARDING VICTORY BY THE DECISION OF JUDGES (HANTEI GACHI)

1. Should none of the fight participants got clear victory (Ippon Gachi), winner shall be determined by decision of judges (Hantei).
2. Decision of judges shall come into force if three or more judges of five (1 referee and 4 corner judges) judging the fight have voted in its favour.
3. If a competitor did not receive Waza-Ari point or penalty point (Genten), the following factors listed in the order of their significance shall be taken into account when determining winner:
 - 1) efficient techniques delivered.
 - 2) offensiveness.
 - i) “Efficient technique” shall be considered strike that has not put the opponent into knock-down but was delivered clearly; counterattack delivered upon evading the opponent’s strike that failed to reach the aim; good techniques shown during the fight.
 - ii) “Desire to attack” shall appear in a greater number of strikes delivered with hands and legs as compared with opponent, and in continuous pressure towards the opponent. Only pressing forward without any attacks will not be considered as offensive.

4. The first rebuke (Chui Ichi) in the main bouts (Honsen) shall not be taken into account when judges deliver their decision (Hantei). But the first rebuke (Chui Ichi) shall be taken into account when judges deliver their decision after the extra time (enchosen). However, the advantage the competitor had shall be taken into account in the first place.

RULE VIOLATIONS (HANSOKU)

1. The following shall be considered to be the rule violations.
 - a. All hand techniques to the head. In some cases even finger touches to these places may be considered to be violation. However it shall be allowed to imitate strikes to the face;
 - b. All hand techniques to the throat and neck;
 - c. Strikes to the groin;
 - d. Headbat (Zutsuki);
 - e. Attacking fallen opponents;
 - f. Strikes to the spine;
 - g. Attacking while the head is in contact with the opponent;
 - h. Holding on to opponent's neck, head and shoulder by grabbing or hooking. According to the rules, arm above elbow, excluding the elbow itself, shall be deemed to be shoulder;
 - i. Grabbing karategi, hand or leg of the opponent;
 - j. Pushes to the body and shoulders with palm;
 - k. Continuously delivering body blows while standing square towards the opponent(delivering combinations of body blows itself is not against the rule, as long as it is not done continuously);
 - l. Approaching opponent without strikes, pressing hands or body to the opponent's hands or body without delivering strikes, as well as the performance of any attack or defense techniques while pressing himself/herself to the opponent or pressing the hands to the opponent's hands;
 - m. Approaching opponent upon delivering the strike, and got in to same situation as l. In such a situation the competitor approaching opponent shall be reckoned violating rules. The competitor who approached the opponent has to step back to the distance. However, brief and momentary touches of the opponent's hands or body shall not be regarded as the rule violation, if it did not give any pressure.
 - n. When moving onward to the opponent, delivering strikes shall be necessary! Onward movement without delivering strikes shall be regarded not as attack but as disregard to distance and face protection. Clauses from k to n can be interpreted in a wide sense as violation of prohibition to push opponent with palms.
 - o. Attack to the knee joint with straight leg kicks: Mae-geri, Sokuto (foot edge kick) or heel kick (Kakato).
 - p. In case of the competitor's seconds and supporters slandering, using abusive language and showing abusive gestures in respect of his opponents or judges referee or the Executive Committee of the Tournament shall give oral warning (Keikoku) to this competitor. Should afterwards his seconds and supporters continue performing abusive acts rebuke (Chui) will be given to this competitor, and in case of especially malicious abusive acts, he will be given penalty point (Genten) instead. In case of giving rebuke (Chui) or penalty point (Genten) to the competitor for the disgraceful behaviour of his seconds

and supporters, when another participant from the same team or the country (if this happens at the international tournament) which the punished competitor belongs to enters the ring for participation in fight, the number of his seconds shall be limited by one person for that given tournament only.

- q. Any cases not determined above but acknowledged by judges to be the violation of any rules, e.g., the competitor pretending to attack (Kakenige).
2. Rule violations, for those especially dangerous and malicious shall be punished by Genten, and all other penalties shall be punished by rebukes (Chui).
3. Points shall not be given for attacks after a push.

ORAL WARNINGS (KEIKOKU)

1. If referee perceived violation of rules (Hansoku) in competitor's acts and stopped the bout but was not supported by corner judges, or if three or four corner judges showed "Hansoku!" ("Violation of rules!") and referee stopped the bout but reckoned such violation to be minor and not deserving to be punished by giving rebuke (Chui), referee may give the offender oral warning (Keikoku).
2. If competitor repeatedly violates rules for which he was already given oral warning, he may be given rebuke (Chui) even if the violation was minor.
3. Oral warnings (Keikoku) shall not be taken into account when judges make their decision (Hantei).
4. If a corner judge decided that he overlooked a violation (Hansoku) for which referee gave an oral warning to the competitor, during the bout he must attentively trace violations for which referee gave the warning to the competitor. This rule shall not cover cases when decision of the corner judge was right.
5. If a competitor was given oral warning (Keikoku) due to the abusive behaviour of his seconds, and if the seconds continue to behave themselves abusively, the competitor may be given rebuke (Chui).

PENALTY POINT (GENTEN)

1. The penalty point (Genten Ichi) shall be given in the following cases:
 - a. if competitor received the second rebuke (Chui);
 - b. in case of serious violation of rules;
 - c. if referee regards behaviour of competitor during the bout as disrespectful in respect to the opponent or judges; the competitor shall be liable for the same acts of his seconds;
 - d. penalty point (Genten) shall be regarded lower than Waza-Ari point but by its value approaches to the latter with minus sign.
2. Should competitor receive the second penalty point (Genten Ni) will result in the disqualification of the participant.

DISQUALIFICATION (SHIKKAKU)

1. Competitor's disqualification shall be announced in the following cases:
 - a. if competitor receives the second penalty point (Genten Ni), i.e. in total two penalty points (Awasete Genten Ni);
 - b. if competitor fails to obey orders of the judges during the bout;
 - c. in case of rude and disrespectful behaviour or especially gross violation of rules;
 - d. in case of demonstration of exultation after declaration of victory by the decision of judges (Hantei Gachi), clear victory (Ippon Gachi) or giving of Waza-Ari point, or in case of demonstration of disrespect to his opponent on the ring;
 - e. if competitor comes to the ring more than 1 minute later or does not enter to it at all;
 - f. if the participant weighed more than the weight division he/she entered.
2. Doping shall be prohibited. In case of positive doping test disqualification of the competitor shall be announced, and all results of his fights shall be cancelled.

CONSTANT VIGILANCE (ZANSHIN)

1. Having heard whistle of corner judge pointing to the rule violation (Hansoku) or to the exit from the competition area (Jogai), the bout participant shall in no circumstances make decision to stop the bout and relax losing vigilance.
2. Bout participant has to obey to referee's commands, not to whistles blown by the corner judges.
3. Bout participant has to maintain vigilance even after the referee's "Yame!" ("Stop!") command. Should competitor lose vigilance (Zanshin), allow strike and be knocked out, judges may decide to admit his clear defeat (Ippon Make).
4. If bout participant delivered strike to the opponent after the referee's "Yame!" ("Stop!") command, and depending on the damage caused to the opponent, his disqualification (Shikkaku) can be announced, or he can be given penalty point (Genten) or rebuke (Chui).
 - a. The participant received the blow and fell unconscious but woke up, or received enough damage to cause problem to continue the fight, in which case the offender will be disqualified.
 - b. The participant doesn't fall unconscious but received light damage, or cause the fight to stop for a while. The offender will receive Penalty Point(Genten).
 - c. The participant received the blow but it had no effect. The offender will receive Rebuke(Chui).
 - d. The blow did not hit the target. The offender will receive Oral Warning(Keikoku).

FIGHT WITHOUT SPIRIT(MUKIRYOKUJIAI)

1. If 2 of the participants performed with clearly lesser techniques than they have shown from previous fights, and showed no spirit. Referee give Rebuke for both participants. If the performance does not improve, Referee will stop the fight and after a discussion with the Superior Arbitrator, both participants will be disqualified.
2. If this happens at the finals. The 1st and 2nd place will be left empty. If this happens at the fight for the 3rd place, the 3rd and 4th place will be left empty.
3. If this happens during the tournament. The one who was defeated at the previous round will be reckoned as the winner, and that participant may return to the tournament.